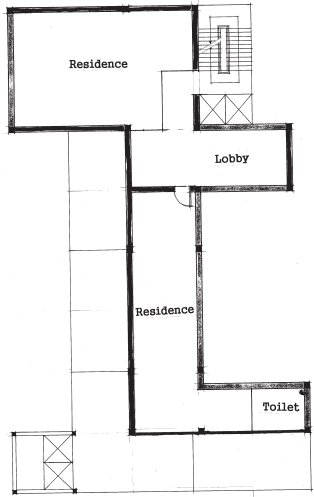
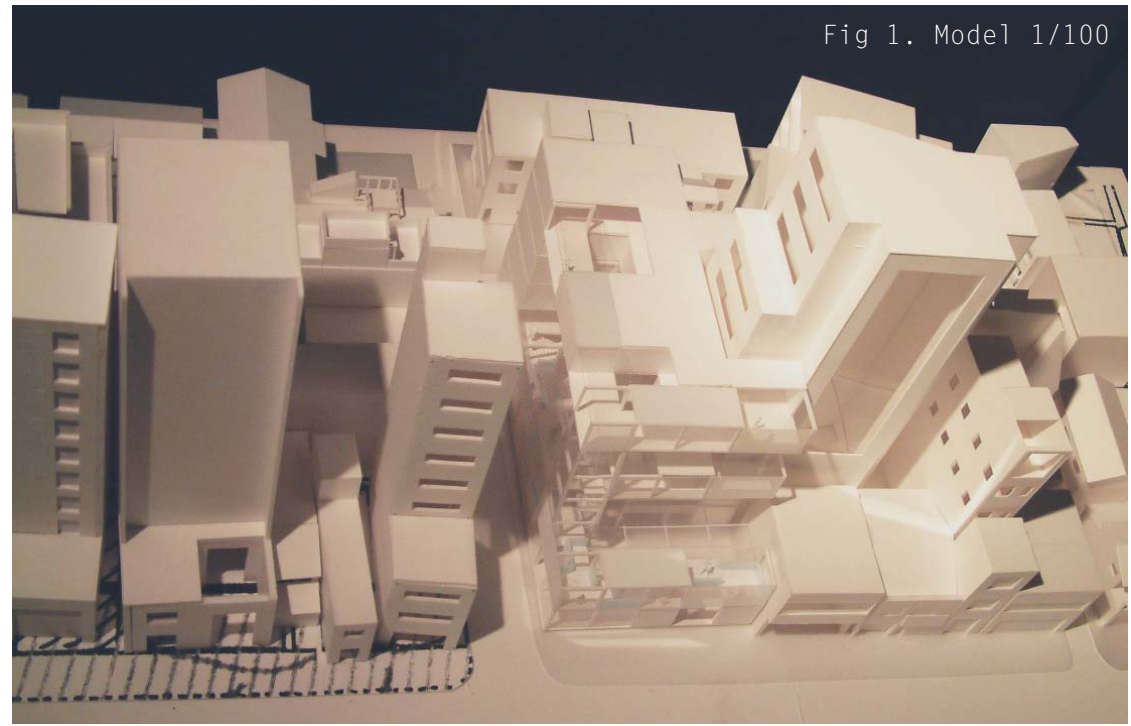
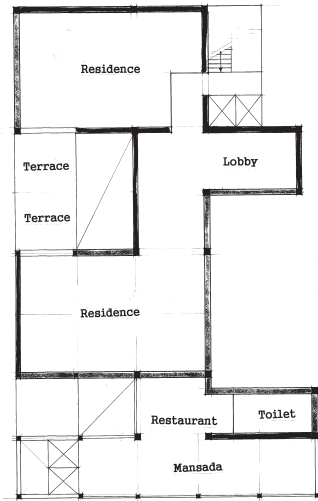


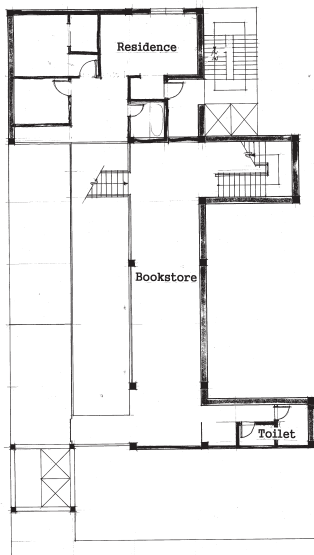
Fig 1. Model 1/100



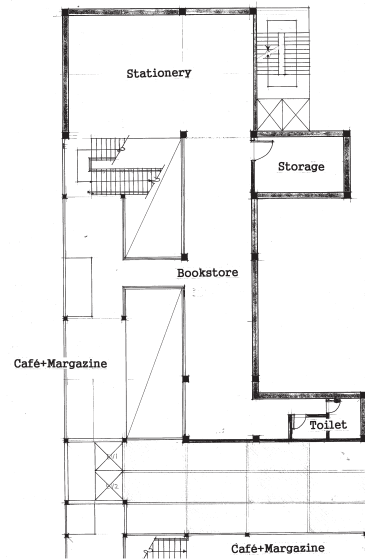
Plan 5F



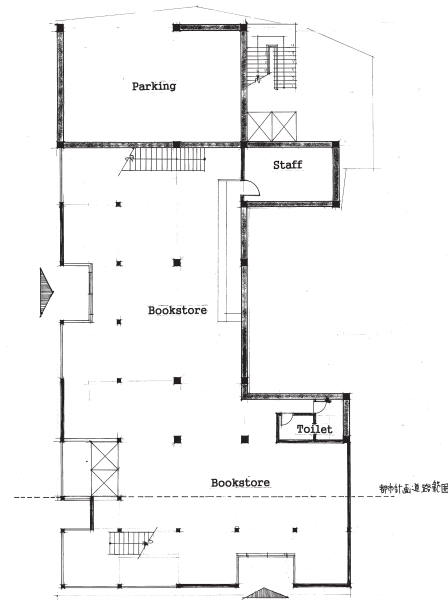
Plan 6F



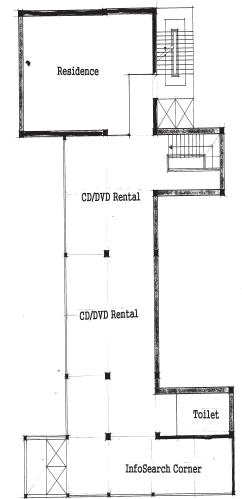
Plan 1F



Plan 2F



Plan 3F



Plan 4F

Fig 2. Plan_Hand Drawing

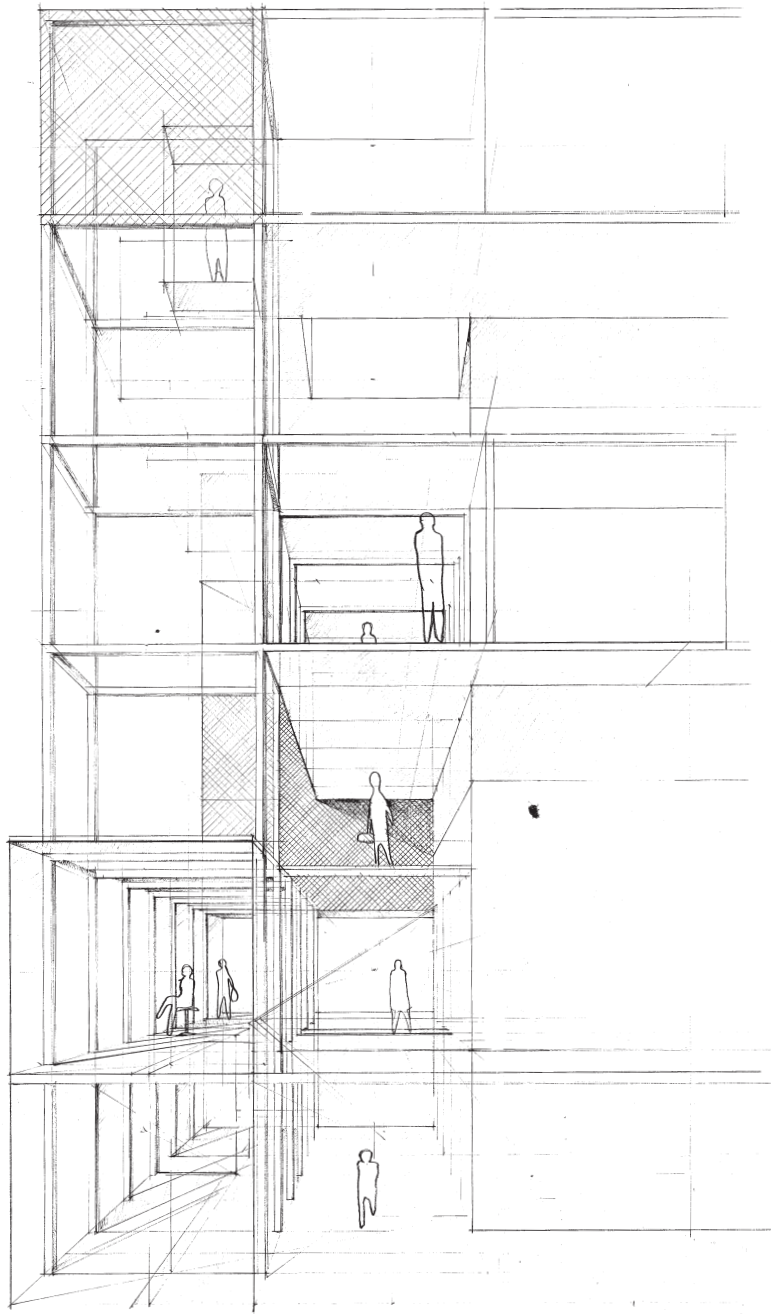


Fig 3. Elevation Perspective

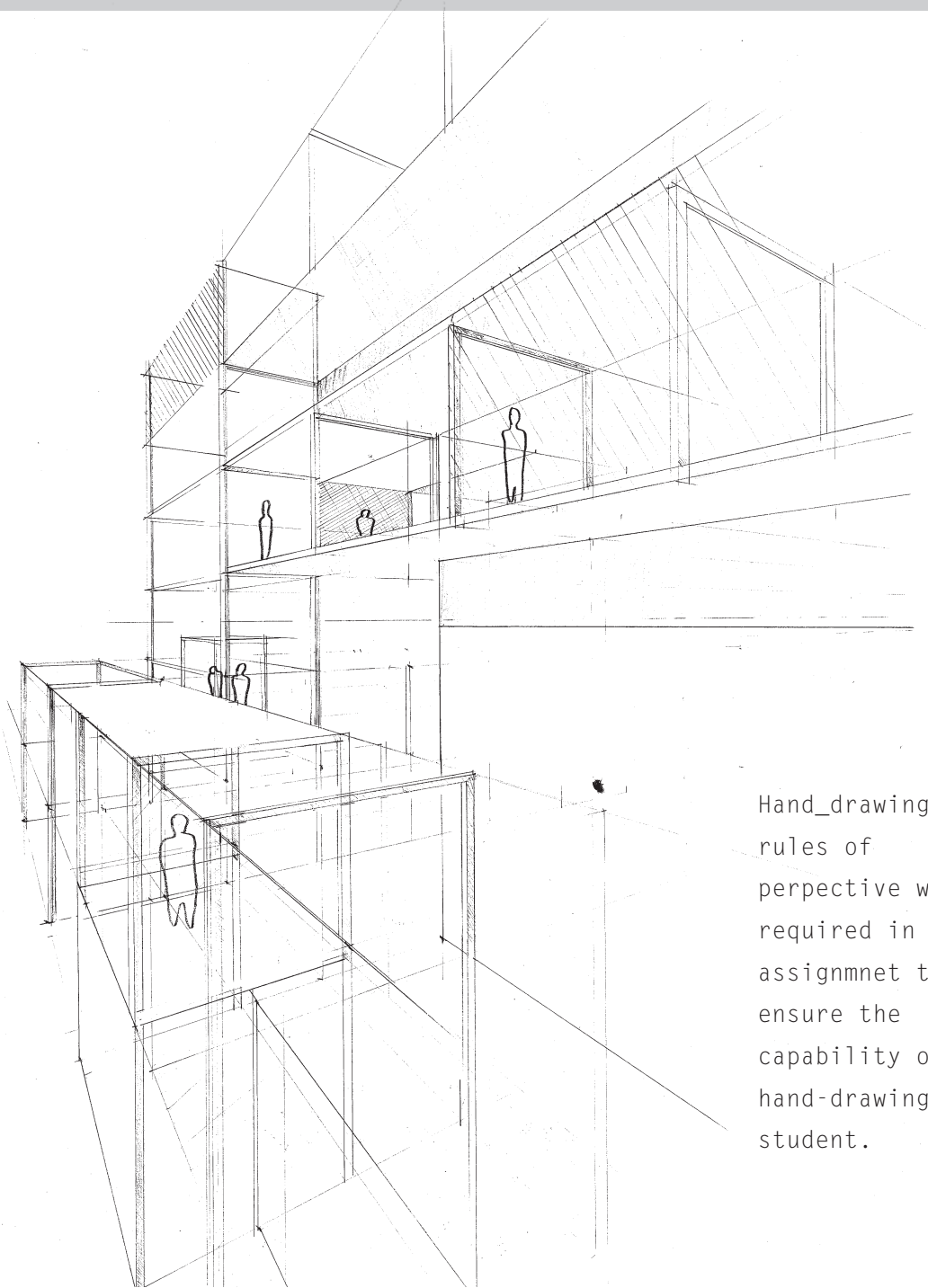


Fig 4. Frontview (right to left) Perspective

Hand_drawings by rules of perspective were required in this assignment to ensure the capability of hand-drawing in a student.



Fig 6. Perspective from the opposite Building Rooftop

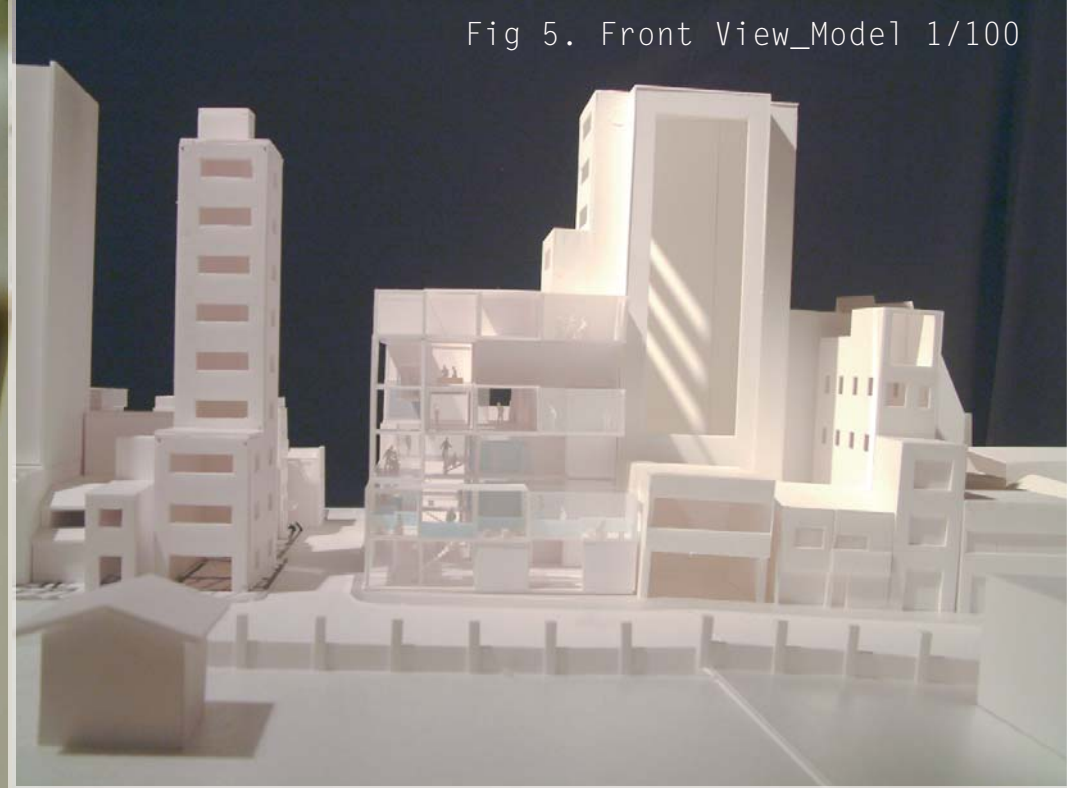


Fig 5. Front View_Model 1/100

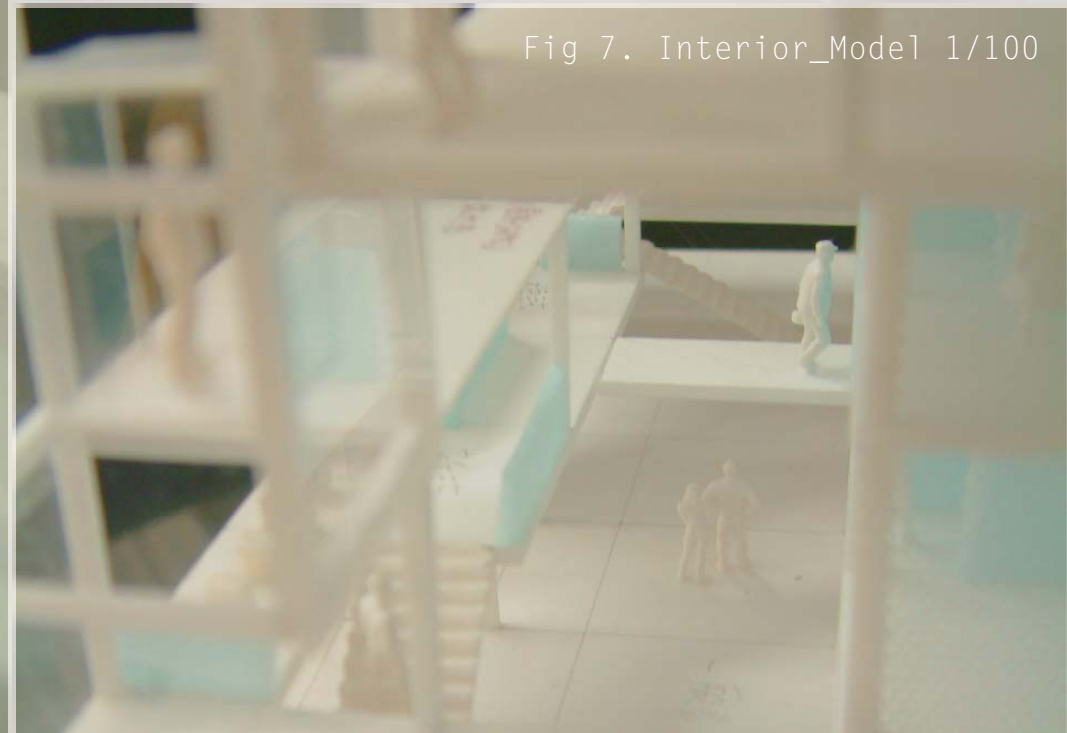


Fig 7. Interior_Model 1/100